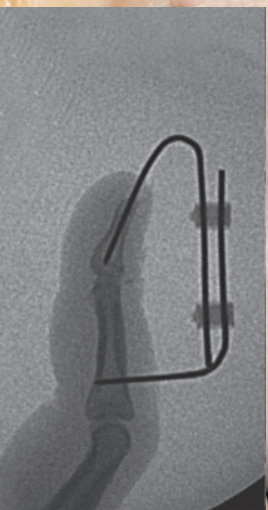
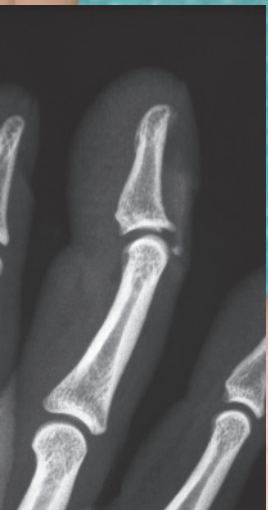


**MALLET FINGER**  
**Stéphanie Gouzou, MD**  
 University Hospital of Strasbourg - France

**METAHUS®**



CE 0459

design: e-moncaux.fr / 233 Ed.09 / © AREX® - 2017

DISTRIBUTED BY

Manufacturer:  
 AREX®  
 BP20  
 3 allée du Clos Tonnerre  
 F91125 Palaiseau cedex FRANCE

**www.arex.fr**

AREX® - BP 20 - F91125 PALAISEAU cedex FRANCE — T. +33 [0] 169 412 212 — F. +33 [0] 169 411 110 — info@arex.fr

**HK<sup>2</sup>**  
 Single use External Fixator  
**METAHUS®**

**AREX®**  
 Stay the course

One HK<sup>2</sup> unit:

- 2 KW of same diameter (1.2 mm or 1.5 mm or 1.8 mm)

- 1 connector to joint 2 KW

One HK<sup>2</sup> box contains 10 HK<sup>2</sup> units (non sterile):  
 20 KW and 10 connectors (by 2, see photo below).

• **HK218** and **HK218F**

Ø 1.8 mm : DISTAL RADIUS - METACARPAL BONE

HK218 : 2 KW  
 HK218F : 2 KW threaded  
 + 1 connector for 2 KW



• **HK215** and **HK215F**

Ø 1.5 mm : CARPAL, METACARPE - PHALANGE

HK215 : 2 KW  
 HK215F : 2 KW threaded  
 + 1 connector for 2 KW



• **HK212** and **HK212F**

Ø 1.2 mm : CARPAL - PHALANX

HK212 : 2 KW  
 HK212F : 2 KW threaded  
 + 1 connector for 2 KW



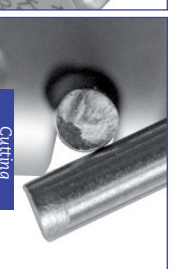
HK2 pliers [ref: HK2P] was specifically designed for the using of HK<sup>2</sup> connectors.



Bending



Crimping



Cutting

