



The Most Trusted Name in Implants

Trusted by Surgeons Worldwide Since 1989

ABOUT US



Implantech is the leading manufacturer of facial and body-contouring implants, recognized for its commitment to innovation, precision, surgeon collaboration and education. All products are proudly made in the USA under strict quality standards, ensuring consistent performance and safety.

By the Numbers



200+

Facial implant
sizes and styles



65

Countries served
worldwide



35+

Years in business

PRODUCT HIGHLIGHTS



Conform™ Facial Implants

Implantech's Conform™ grid pattern provides flexible placement and easier contouring along the underlying bone.



Composite™ Facial Implants

Made of flexible silicone fully encased in a layer of expanded polytetrafluoroethylene (ePTFE), Composite™ Facial Implants feature the best of silicone's shape retention and aesthetic feel plus the stabilizing tissue attachment promoted by ePTFE.



Silicone Carving Blocks

Implantech's silicone carving blocks are easily fashioned into patient-specific implants. Choose from multiple shapes with varying durometers:

- Rectangular blocks
- Contoured blocks



WE SET A HIGHER STANDARD



Implantech proudly maintains certifications to ensure that each and every implant is manufactured to the highest quality and safety standards.



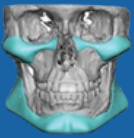


The Most Trusted Name in Implants

Trusted by Surgeons Worldwide Since 1989



Support Services



3D Accuscan®

Patient-specific resources driven by technology.



Education

Cadaver labs with expert faculty.



Physician Resources

Surgical technique guides, videos, and online access.

THE IMPLANTECH ADVANTAGE



1

LEADING THE WAY IN BIOMATERIALS

Crafted with the highest quality of implant grade silicone and/or ePTFE (expanded polytetrafluoroethylene) our implants are ideal for augmenting chin, midfacial, nasal, and other facial areas.

2

INNOVATIVE BY DESIGN

Designed by the world's leading surgeons, Implantech's facial implants provide the youthful, cosmetic and reconstructive solutions desired by patients.

3

UNPARALLELED SERVICE EXPERIENCE

Our experienced and friendly customer service team stands by its commitment to product knowledge, expediency, and exceptional customer care.

4

ADVANCING SURGICAL TRAINING

Implantech proudly hosts the Masters Educational Series. With an expert faculty and cadaver lab, surgeons discover basic and advanced techniques in Facial and Body Contouring implants.

5

A LEGACY OF EXCELLENCE

The original manufacturer behind many of today's most popular implant styles, the Implantech catalog is an industry standard for over 35 years.